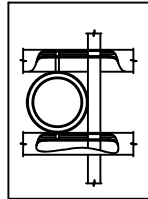


**NOTES:**

- 1.) Post size depends on fence height and wind loads. See ECHELON Plus™ post sizing chart.
- 2.) Panels also available for 6' on center post spacing
- 3.) Additional heights available on request
- 4.) Fourth rail optional.

**RING OPTION**

Held in place with upper and lower internal retaining rods to eliminate unsightly external fasteners.

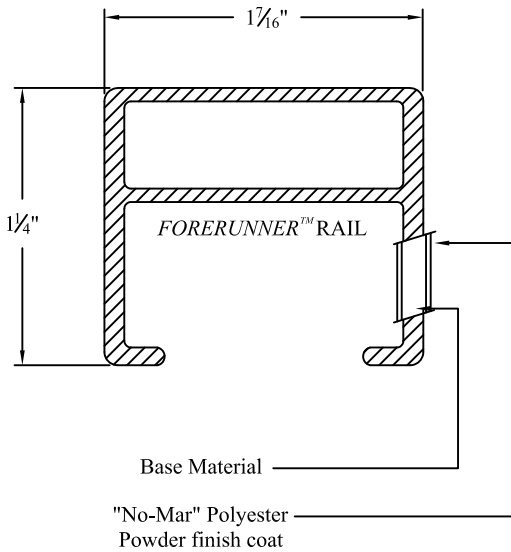


**PANEL BRACKET**

Specially designed two-point connection ensures fixity of rail ends for increased strength.

**INTERNAL RETAINING ROD**

Variable pitch connection system for ease of installation, high angle bias ability and elimination of unsightly external fasteners.



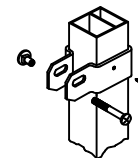
**INTERIOR GUIDE CHANNEL**  
Channel forms lower limit of raceway for retaining rod and allows for high angle bias ability.

**FORERUNNER™ RAIL**  
"U"-Channel specially formed high strength architectural shape.

**REINFORCED POST**

Internal rib increases against wind loading as well as other horizontally applied forces (Only on 2 1/2" aluminum posts).

**OPTIONAL WRAP AROUND END BRACKET**



Values shown are nominal and not to be used for installation purposes. See product specification for installation requirements.

**COMMERCIAL STRENGTH ALUMINUM**

Title: **ECHELON PLUS MAJESTIC 3/4-RAIL W/RING OPTION**

DR: LJM SH . 1 of 1 SCALE: DO NOT SCALE

CK: BS Date 10/19/2017 REV: E



**AMERISTAR®**

1555 N. Mingo  
Tulsa, OK 74116  
1-888-333-3422

www.ameristarfence.com